

Community-Based Emergency Management



ALL DISASTERS HAPPEN LOCALLY



Why Are We Included?

- Part of the **WHOLE COMMUNITY**
- Partners on the Emergency Management Team
- Failure to include animals can derail the best plan



Opening a Shelter is a lot of Work!

Other options??

- Veterinary Hospitals
- Boarding Facilities
- Pet Friendly Hotels
- Shelters



Safety of Pets in Disasters

Senate Bill 1172

- Amends existing Civil Defense Laws of 1950
- Any emergency plan of operations shall include strategies to support the needs of people with household pets, and the needs of the household pets under their care



IT'S ALL ABOUT...

PEOPLE AND
PUBLIC SAFETY



Why are we included?

The **Human-Animal Bond:**

- Is a mutually beneficial and dynamic relationship between people and animals that is influenced by behaviors that are essential to the health and well-being of both.
- This includes but is not limited to emotional, psychological and physical interactions of people, animals and the environment.



Why Do We Need to Include Animals?

- Animal sheltering in a disaster is a **public health and safety issue**.
- While the principal concern of emergency management is about the safety of people, it is recognized that protecting pets and livestock helps safeguard the residents of the community.



Types of Pet Shelters

Temporary shelter

May not be in close proximity to human shelter

Animals are cared for by members of a sheltering organization and volunteers until the animals can be returned to owners

Co-location shelter

In the immediate vicinity of the human shelter

Requirement of owners' involvement in their pets' care



Companion Animal Sheltering

- **Co-location Shelter**

- In the immediate vicinity of the human shelter
- Requirement of owners' involvement in their pets' care

- **Co-location Shelter Advantages**

- Contact between people and their pets is beneficial, and providing interaction helps promote a healthy environment
- The shelter needs fewer volunteers



Companion Animal Sheltering

Facilities that may be adapted for emergency animal sheltering:

- School
- Recreation center
- Public works garage
- Warehouse
- Fairgrounds
- Parking lot



Who is coming and how many?



Should be scaled to the number of human guests that are expected

Animal Population Estimates

On average, 60% of households in the US own a pet.

The average number of pets is 1.5 per household.

100 cots=40 crates



Site Selection

General considerations:

- suitable for cold and hot weather
- flooring-cement is best
- hot and cold water available
- power and lighting
- ventilation
- waste removal



Credit: Kathy Kmonicek/AP Photo)

Companion Animal Sheltering

Basic needs:

- 3-4 square feet floor space/crate and an access aisle 3-4 feet wide
- Operational water, sewer, power
- Adequate lighting and ventilation
- Preferably separate HVAC from the human shelter
- Unobstructed entrance and exit, emergency exits
- Functional restroom
- Non-carpeted floors
- Secure perimeter
- Separation from human shelter adequate to control allergies, noise, and pathogens

PET FRIENDLY SHELTER FACILITY SURVEY



Completed by	Facility Name/ Affiliated Org. /Owner	Date
Address		Lat: Lon:
Contact 1 Authorize use or open	Phone 1* H W C Phone 2 H W C	email
Contact 2 Authorize use or open	Phone 1 H W C Phone 2 H W C	email
Times facility not available? Yes No	Provide details of facility limitations to availability by dates or times or area	
MOU signed with local DART or SMART to use facility? Yes No	Directions to facility/ from nearest crossroads and evacuation route	
Parking	Areas of facility not open to shelter use	
Local Gas/Food/Supplies	Directions	
Local Veterinarian	Directions	
Nearest Human Hospital	Directions	
Associated Human Shelter Location	Address	
Operated by	Facility Name	Lat: Lon:
Contact 1	Phone 1 H W C Phone 2 H W C	email
Contact 2	Phone 1 H W C Phone 2 H W C	email
Animal Shelter Details/Capacity ***	Dogs # Rooms _____ Sizes _____	Cats # Rooms ____ Size _____
	Space for _____Lg and XLG wire crates	Space # _____M Carrier/crates
Exotics Room size_____	Heating and Cooling Capacity if power Available.	Ventilation/ Screened Windows (weather permitting) Yes No
Heat source Yes No	Fans necessary? Electrical outlets? Yes No Yes No	Animal safe fence for walking outside? Yes No
Controlled Exits and entrance? Yes No	Adequate lighting? Yes No	Hurricane proof windows? Yes No

*H W C: Home Work Cell **Add description, longitude and latitude when possible *** See page 3 for capacity info

Shelter Survey



Fire alarms +/- or sprinkler system working ? Yes No	Fire Alarms manual / automatic alert	Nearest fire station
Emergency generator on site? Yes No	Generator Type	Fuel source _____ Auto/Manual start?
Capacity in Kilowatts _____	Date last inspected _____	Run time _____
Facility is not in FEMA flood zone <input type="checkbox"/>	Facility is _____ levels with stair access. Pets will occupy one level or several levels?	
Areas for review Please add description	Safe entry, exit and waiting area for pet owners during intake	
Safe entry and exit for owners while feeding pets	Safe entry and exit for owners while walking dogs	
Intake and registration	Toilets available to volunteers or portable toilets needed	
Veterinary triage	Veterinary Treatment	
General animal population Dogs	General animal population Cats	
General animal population Exotics	Special population unvaccinated	
Special population quarantine bite or sick	Special population isolation sick	
Dangerous dog area for crates	Crate Cleaning area	
Animal Food prep and cleaning	Laundry Facilities available? Coin operated?	
Animal food storage	Potable water source	
General Supply storage	Non Potable water source	
Shower facilities	Hot water availability	
Human food storage and eating area	Kitchen	
Garden hose hookup	Animal waste storage	
Utilities	Electric company	Contact info
Water company or municipal source	Contact info	
Gas or propane company	Contact info	

Oil company	Contact info
Landline Telephone Company Facility Telephone number	Cell phone coverage outside? Inside building?
Internet Ethernet access Wifi access? Password word availability?	Contact info for access to Wifi or Ethernet

Please use space below to diagram facility, parking, room measurements if available and any notable features.

Exotics will need space for Small enclosures 24"x18' but may also require a L size carrier or crate.

Cats- Medium crates/carriers sizes are approx. 30"L X 22"W (4.5 sq ft) **Allow 4-6 sq ft /cat**

Dogs- Large crates are approx. 42"L X 28"W (8 sq ft) XLarge crates are 48"L X 30"W (10 sq ft) **Allow 10-12 sq ft/dog** by leaving 6 inches between each L or XL crate. A 75'X8' hallway would allow 25 crates with a 4' area in front.

Example of Co-located Animal Shelter



Example of Co-location Animal Shelter



Shelter Components

- Animal intake
- Triage
- Volunteer Sign In
- Animal Housing Areas
 - Cats, Dogs, Exotics, Dangerous animals, isolation
- Food Area



Shelter Components(2)

- Rest Area/ Human first aid
- Donations Area
- Equipment Cleaning
- Exercise
- Veterinary Services



Shelter supplies (1)

Dogs

- Crates
- Dog food - canned
- Dog food - dry (pallets, secure container)
- Dog muzzles
- Food (in secure containers, dry food on pallets)
- Hurricane fencing
- Leashes, collars, harnesses (assorted sizes)
- Poop scoops
- Scrub buckets/mops/sponges
- Spray bottles
- Trash cans (preferably on wheels)
- Rabies Pole

Cats

- Cat gloves (heavy gauntlets or welder gloves)
- Cat litter and disposable pans
- Cat net
- Crates & vari-kennels (various sizes)
- Food (dry food stored in secure containers.)
- Paper/pens



Shelter Supplies (2)

General Supplies

- Appropriate sized food bowls
- Blankets & towels
- Can openers
- Clipboards
- Disinfectant (bleach) in spray bottles
- Duct tape
- Fans
- First Aid kit
- Generator
- Hand sanitizer
- ID neckbands
- Latex/non-latex gloves
- Paper towels
- Scrub buckets/mops/sponges
- Signage
- Spray bottles (for disinfectant)
- Tables and Chairs
- Trash bags
- Trash cans (preferable on wheels)
- Watering cans
- zip-ties

Small Mammals

- Glass aquariums with secure screen covers
- Heat sources for reptiles (heat stones)
- Newspaper
- Portable heaters
- Small cages with secure screen covers
- Species-specific food
- Timothy hay
- Water bottles or ceramic (non-tip) water bowls

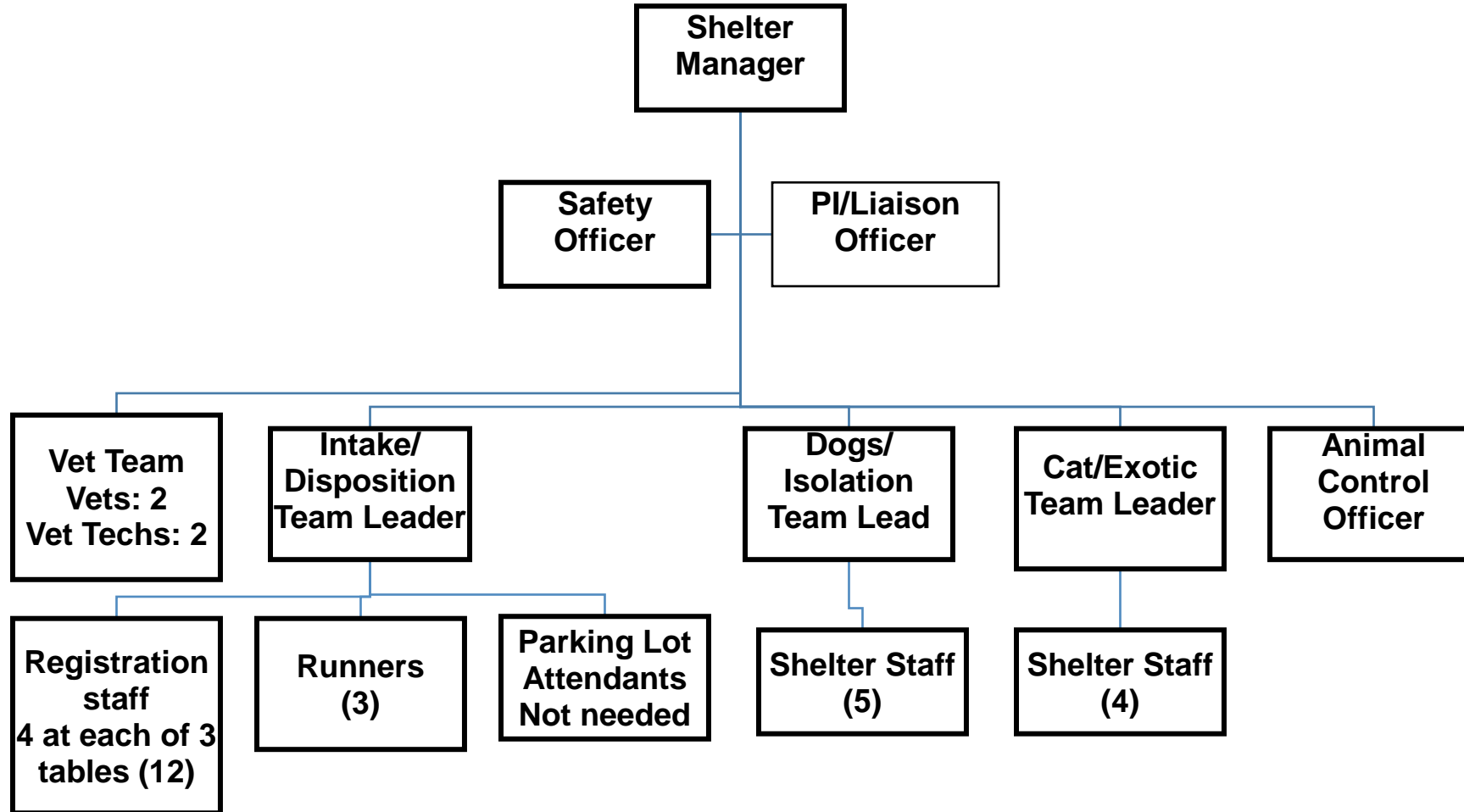


People/Jobs Needed to Run the Shelter

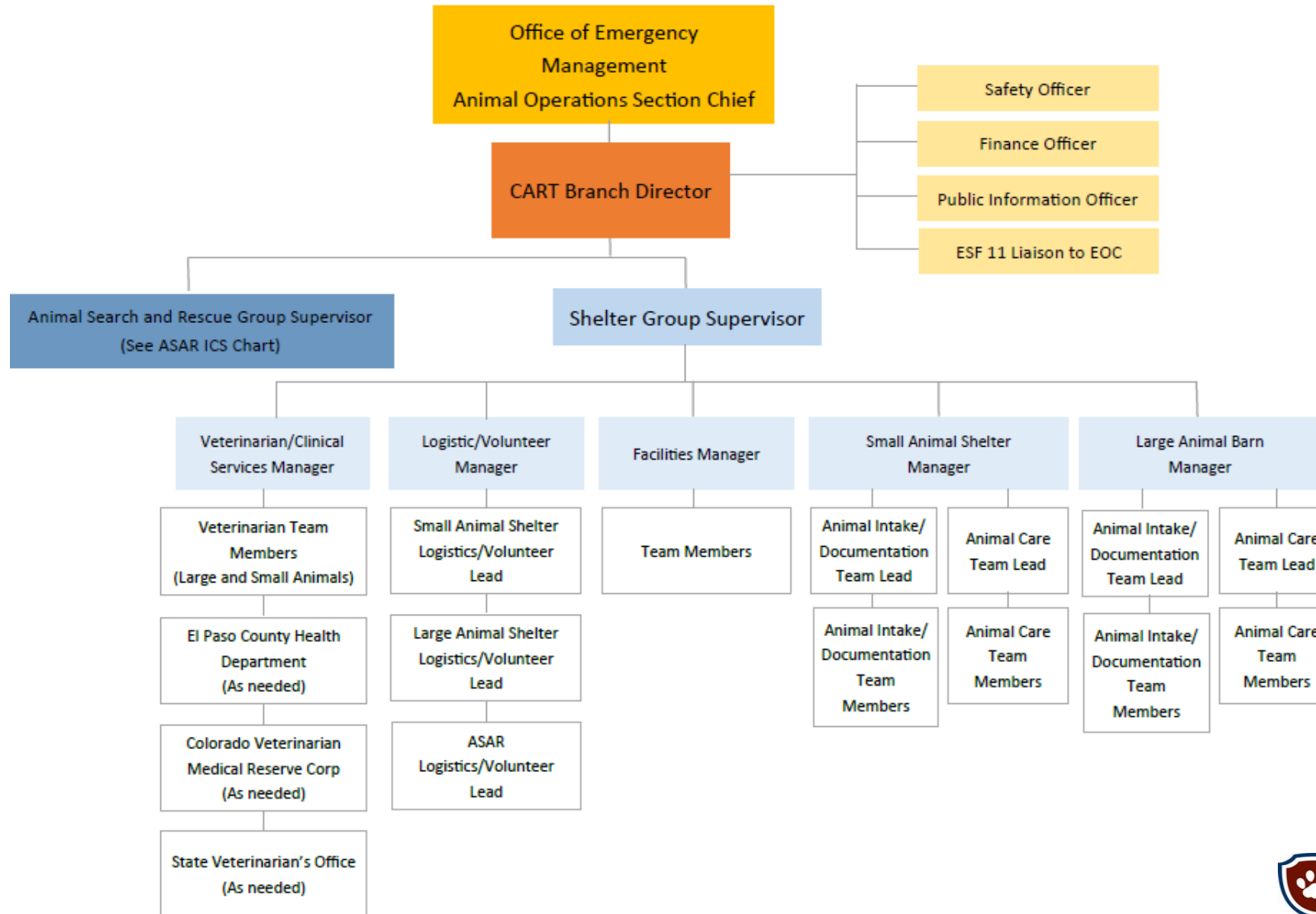
- Veterinarian – to exam animals
- Veterinary Technician – if needed by vet
- Shelter workers – to take care of animals and the shelter
- Administrative workers – to help with paperwork, photos and logistics
- Security
- Possibly have to provide 24 hour coverage



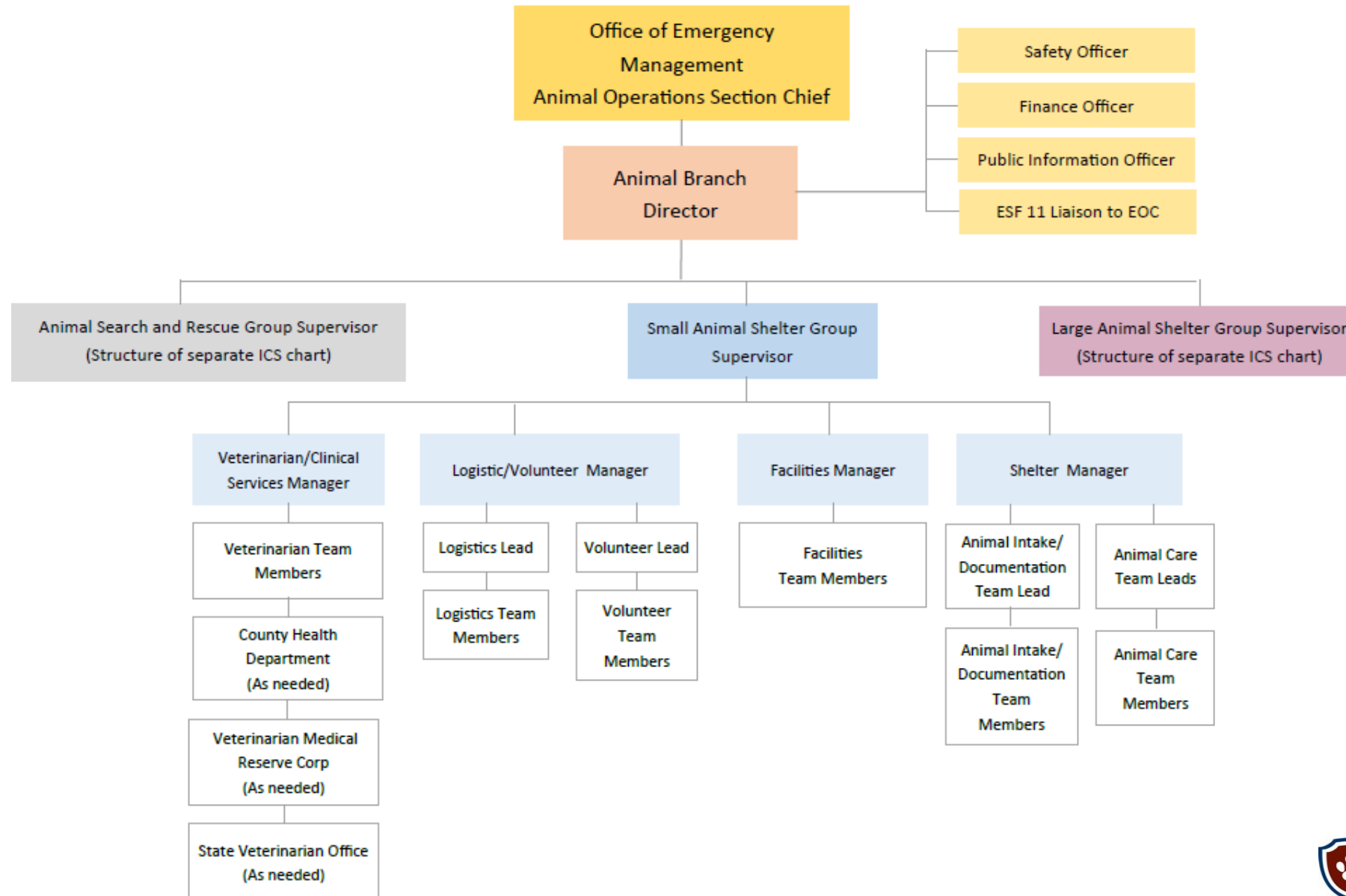
Shelter Org Chart



Disaster Animal Shelter Command Structure



Small Animal Disaster Shelter Command Structure



Security

- Must have shelter rules
- Volunteers must be easily identified

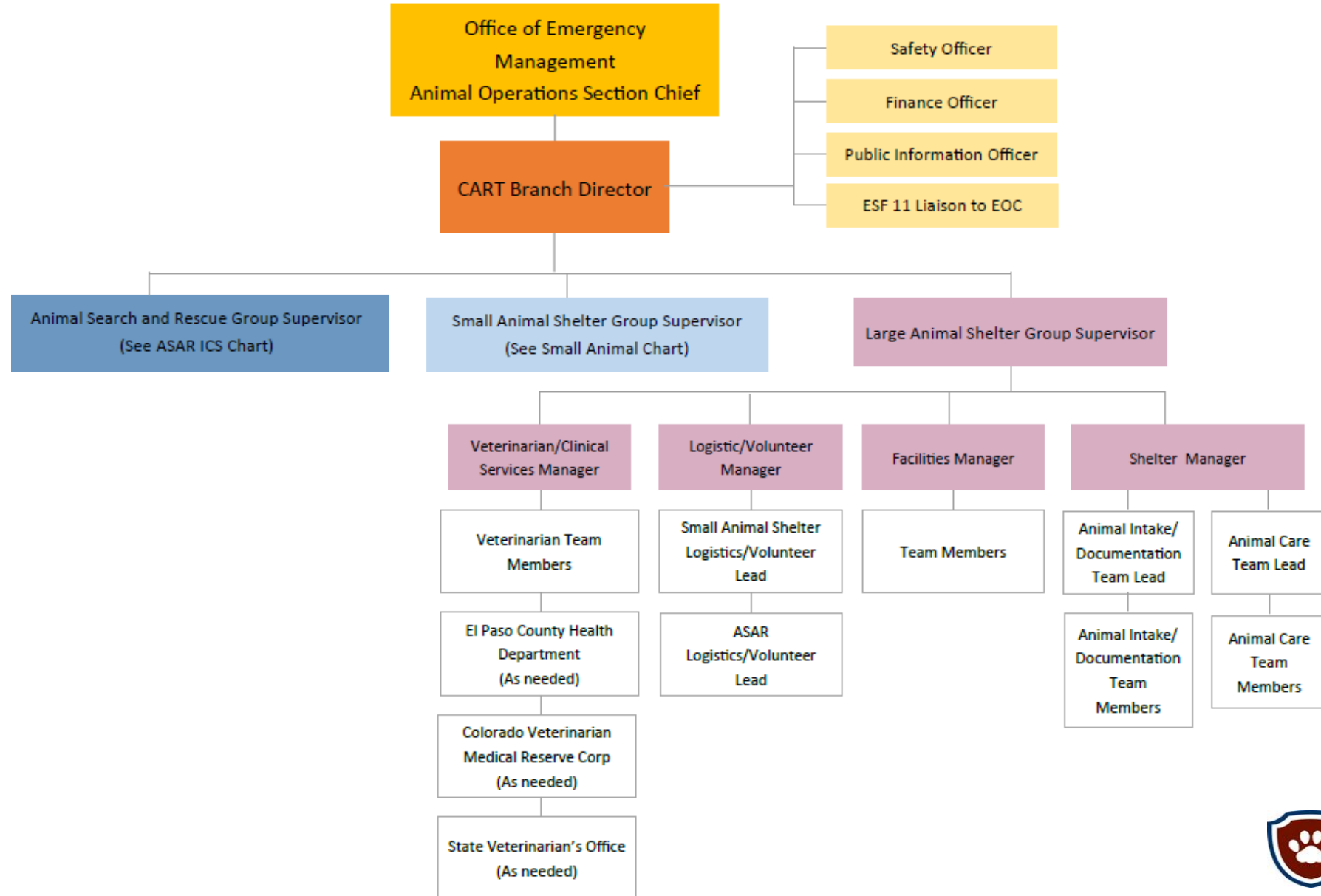


Large Animal Sheltering

- Sheltering in place may be the best option for horses if it is safe for them to stay.
- Clean dry food and fresh water needs to be provided daily.
- Rescue options should be in place if conditions worsen.
- Evacuation locations include fairgrounds, private farms, athletic facilities, parking lots.



Large Animal Disaster Shelter Command Structure



Goals of a Disaster Animal Response Team

- to assist emergency management with animal issues that might occur during an emergency or disaster
- to have plans for animals that fold into all emergency plans
- to establish pet-friendly shelters that are co-located near human shelters
- to assist with establishing and implementing evacuation procedures that include animals
- to identify known hazards in the local area that might affect animal populations
- to identify resources that exist and establish procedures for utilization
- to help identify gaps in animal issues in emergency management and try to help eliminate them



State of MA Animal Response Team

- SMART is a coordinated network of state organizations, agencies, and individuals whose mission is to be a key resource in MA by establishing Best Practices for emergency preparedness for animals.
- Through training and education, SMART assists in the development of disaster animal response teams both locally and regionally in an effort to strengthen capabilities throughout the State.
- **We assist communities in developing their own local animal disaster plans**



Meet the Board of Directors

- Ellen Borreliz At-large
- Ed Carlson MVTA
- Larry Holmberg At-large
- Anne Lindsay MAC
- Steven Rowell Tufts Cummings School of Veterinary Medicine (retired)
- David Schwarz MVMA
- Cheryl Snyder Medical Reserve Corp/ Pubic Health
- Jean Weber MSPCA
- Liz Williamson VMAT, NVERT
- Open seat ACOAM
- Open seat ARL of Boston



SMART website

www.smartma.org



SMART email

info@smartma.org

Important Resources

- NASAAEP.org
- www.Petshelterplan.org



WE ARE HERE TO HELP!

Bringing Best Practices and Standardized
Operating Procedures across the
Commonwealth



We Are All On The Same Team With The Same Goals

- Public Safety
- Effective
Emergency
Management



The End

